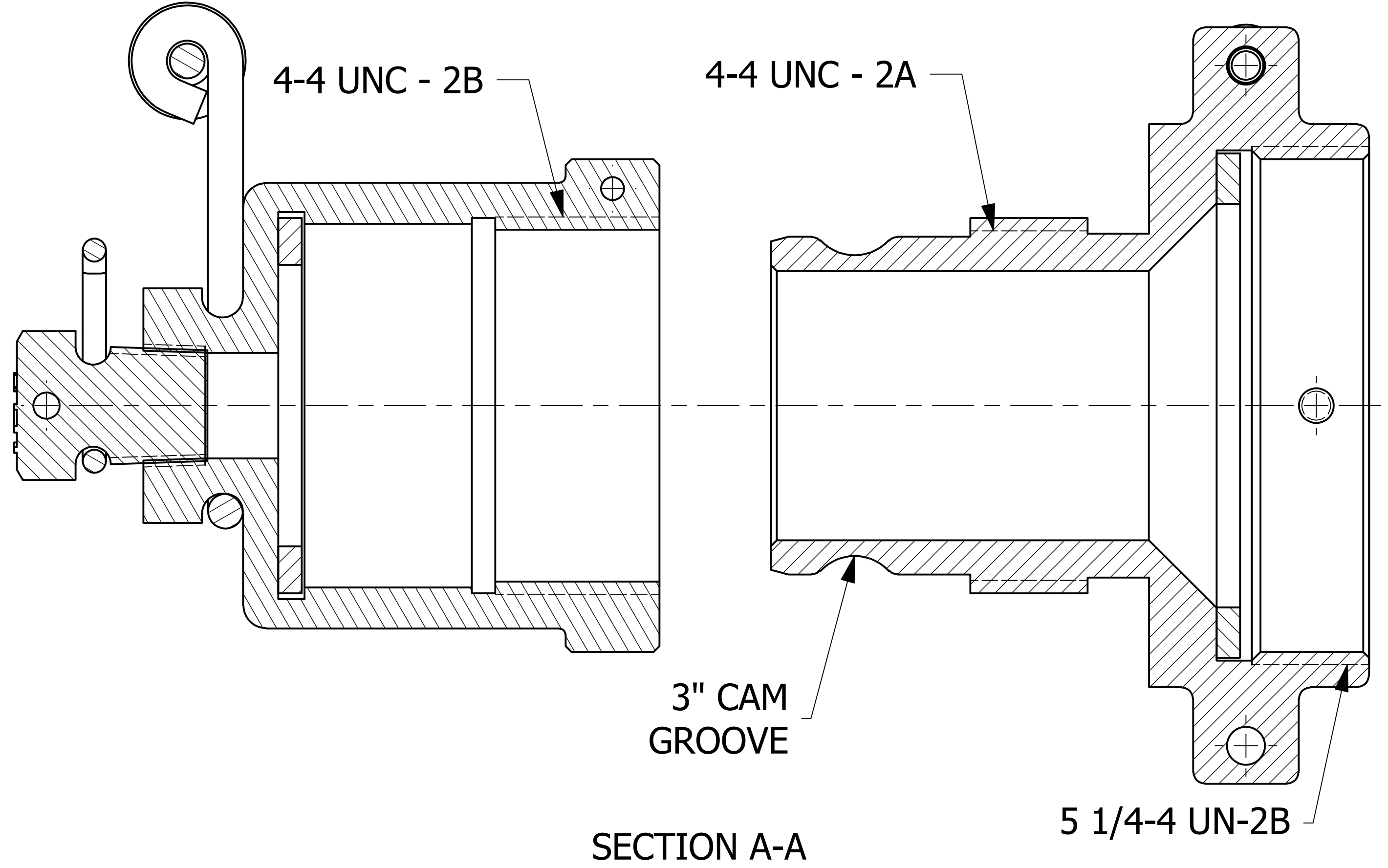
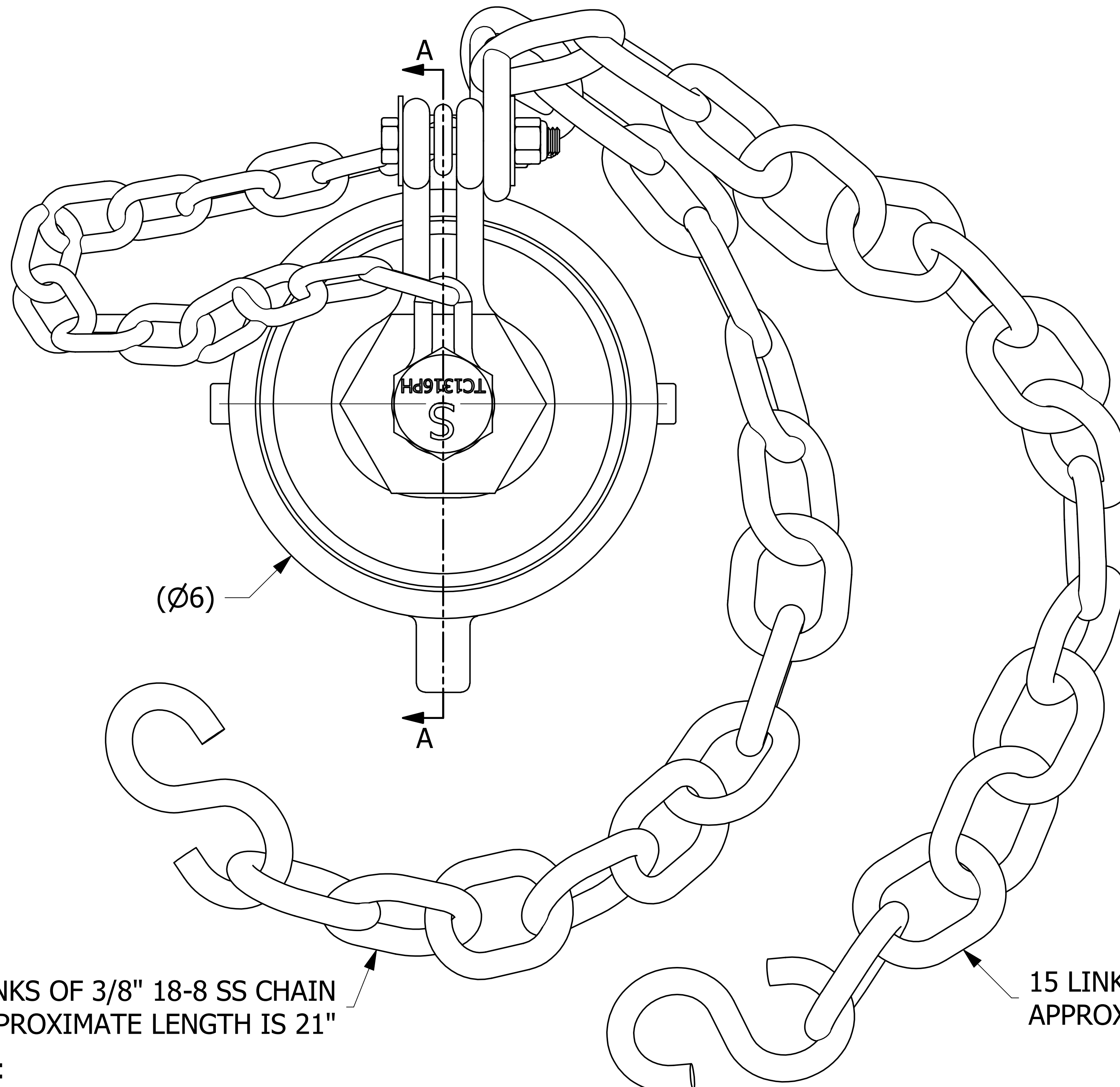


SALES DRAWING SALES DRAWING

SALES DRAWING SALES DRAWING



15 LINKS OF 3/8" 18-8 SS CHAIN  
APPROXIMATE LENGTH IS 21"

15 LINKS OF 3/8" 18-8 SS CHAIN  
APPROXIMATE LENGTH IS 21"

- NOTES:
1. UNLOADING ASSEMBLY IS DOT AND AAR APPROVED.
  2. AAR APPROVAL # IS E-149523.
  3. SET SCREWS SECURE ADAPTER WHEN CAP IS REMOVED.
  4. APPROXIMATE HEIGHT IS 9 1/2".
  5. GASKETS ARE SULFUR-CURED BLACK EPDM.
  6. CAP MATERIAL: 416 SS.
  7. ADAPTER MATERIAL: 316 SS.

UNLESS OTHERWISE SPECIFIED DIMENSIONAL TOLERANCES FRACTIONAL: ±1/16 X.XX: ±.03 X.XXX: ±.015 ANGULAR: ±1° DEBURR ALL SHARP EDGES. ALL MACHINED SURFACES TO HAVE A 125 RMS FINISH UNLESS NOTED OTHERWISE. THIRD ANGLE PROJECTION	DRAWN BY:	RJP
	CHECKED BY:	CHL
	PROTOTYPE BY:	RJP
	PROTOTYPE DATE:	12/11/2013
	APPROVED FOR PRODUCTION BY:	CHL
	PRODUCTION DATE:	12/12/2013

B	RJP	2-5-16	AAR APPROVAL # WAS E-049013 UPDATED TITLEBLOCK	
A	RJP	12-19-13	RELEASED FOR PRODUCTION	
REV	BY	DATE	DESCRIPTION	
<b>SALCO PRODUCTS, INC.</b>				
PART NAME: <b>QUICK CONNECT 3" THREAD ON</b>				
MATERIAL: <b>SEE NOTE</b>				
PROJECT #: <b>090219</b>		SHEET #: <b>1 OF 1</b>		SCALE: <b>1:1</b>
DRAWING #: <b>D37947</b>		PART #: <b>TE3S416SU3A</b>		

THIS PRINT, PROPERTY OF SALCO PRODUCTS INC. CONTAINS PROPRIETARY INFORMATION AND MUST NOT BE COPIED, REPRODUCED, OR USED DETRIMENTALLY TO OUR INTEREST.